

A RARE CAUSE OF HORNER SYNDROME: A SCHWANNOMA ORIGINATING FROM THE CERVICAL SYMPATHETIC CHAIN

Head and Neck Surgery

Submitted : 10.11.2021

Accepted : 22.02.2022

Published : 22.02.2022

Mustafa Dalgıç¹, Deniz Baklacı², Ergin Bilgin¹, Barkın Malkoç¹

¹ Bülent Ecevit Üniversitesi Tıp Fakültesi

² Ankara Numune Eğitim ve Araştırma Hastanesi

Özet

HORNER SENDROMUNUN NADİR BİR NEDENİ: SERVİKAL SEMPATİK ZİNCİRDEN KÖKEN ALAN SCHWANNOM

Schwannom ya da diğer adı ile nörolemmoma, periferik sinir kılıflarının schwann hücrelerinden köken alan tümörlerdir. Boyunda servikal sempatik pleksustan köken alan schwannomlar oldukça nadir görülmektedir. Bu hastalar genellikle boyunda ağrısız şişlik ile başvurmaktadır. Preoperatif olarak kesin tanı koyulması oldukça zordur. Tedavide cerrahi rezeksiyon uygulanmaktadır. Bu hastalarda postoperatif dönemde geçici ya da kalıcı Horner sendromu beklenen bir komplikasyondur. Bu yazıda, boyunda servikal sempatik zincirden kaynaklanan bir schwannom eksizyonu sonrası gelişen Horner Sendromu olgusu tartışıldı.

Anahtar kelimeler: Servikal sempatik zincir, schwannom, Horner Sendromu

Abstract

A RARE CAUSE OF HORNER SYNDROME: A SCHWANNOMA ORIGINATING FROM THE CERVICAL SYMPATHETIC CHAIN

Schwannomas, also known as neurilemmomas, are tumors originating from the Schwann cells of peripheral nerve sheaths. Schwannomas originating from the cervical sympathetic plexus of the neck are extremely rare. These patients generally present with painless swelling in the neck. It is very difficult to make a definitive diagnosis preoperatively. Surgical resection is applied in treatment. Temporary or permanent Horner syndrome is an expected postoperative complication in these patients. In this paper, we discuss a case of Horner syndrome that developed following the excision of a schwannoma originating from the cervical sympathetic chain in the neck.

Keywords: Cervical sympathetic chain, schwannoma, Horner Syndrome

Introduction

A schwannoma, also known as a neurilemmoma, is a tumor originating from the Schwann cells of peripheral nerve sheaths. Of all schwannomas, 25-40% are localized in the head and neck region [1,2]. Head and neck schwannomas generally originate from the cranial nerves, sympathetic chain, or branchial or cervical plexus [3]. They can originate from the cranial nerves except the optic and olfactory nerves. Among the cranial nerves, they are most commonly seen in the vestibulocochlear nerve [4]. Schwannomas originating from the sympathetic chain constitute a rare subgroup [5]. Schwannomas that develop in the neck region have a slow growth pattern and show late symptoms; therefore, their diagnosis is difficult [6,7]. The presentation complaint is usually painless swelling in the neck. Cervical schwannomas generally do not cause neurological deficits. The differential diagnosis includes carotid body tumors, glomus vagale tumors, branchial cleft cysts, malignant neck tumors, and cervical lymphadenopathies [8]. A fine-needle biopsy has very low specificity in the identification of schwannomas. The schwannomas of the sympathetic chain origin must be distinguished from carotid body and glomus vagale tumors because they may change treatment planning [9]. Surgical resection is applied in the treatment of these schwannomas. In these patients, temporary or permanent Horner syndrome is an expected complication in the

Corresponding Author: Mustafa Dalgıç, Bülent Ecevit Üniversitesi Tıp Fakültesi İbni Sina Kampüsü, Esenköy, Kozlu, Zonguldak dalgic_816@hotmail.com

Dalgıç M ve ark . Horner sendromunun nadir bir nedeni: servikal sempatik zincirden köken alan schwannom. ENTcase. 2022;8(1):1-8

postoperative period [10]. Here, we report a rare case of Horner syndrome that developed following the excision of a schwannoma originating from the cervical sympathetic chain in the neck.

Case Report

A 42-year-old female patient presented to our clinic with swelling on the left side of the neck, which lasted for about one year. In the physical examination of the patient, a fixed, hard and painless swelling of approximately 3x3 cm was palpated at level 2 of the left side of the neck. Pulsation was not obtained by palpation. Other examination findings were normal. No diagnostic finding was obtained from the fine-needle aspiration biopsy. Magnetic resonance imaging (MRI) revealed a mass lesion of approximately 36x24 mm in size, originating from the carotid sheath level with higher intensity in T2-weighted sections (Figure 1 a, b).



Figure 1A

Magnetic resonance images in the coronal (a) and axial (b) sections of the T2 sequence, showing the tumor originating from the left cervical sympathetic chain

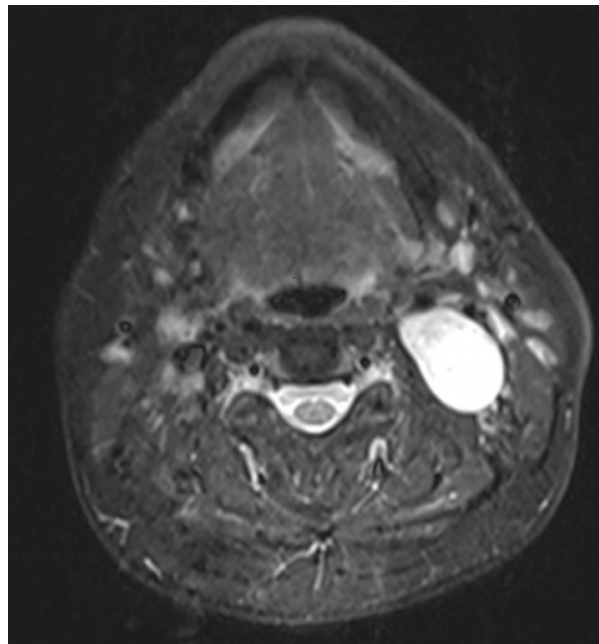


Figure 1B

Magnetic resonance images in the coronal (a) and axial (b) sections of the T2 sequence, showing the tumor originating from the left cervical sympathetic chain

Normal filling was observed in the left common, internal and external carotid arteries on magnetic resonance angiography (MRA) (Figure 2). There was no sign of pushing of the carotid artery. The patient was prepared for surgery with the pre-diagnoses of glomus tumor, neurogenic tumor, and branchial cleft cyst.



Figure 2

Magnetic resonance angiography image

Under general anesthesia, an oblique incision of approximately 6 cm in length was made, starting from the left mastoid apex and extending 4 cm to the lower border of the mandible corpus to the mentum. The sternocleidomastoid muscle was displaced posteriorly, and the jugulocarotid sheath was reached with blunt dissection. On the left, a yellow-colored mass of approximately 5x4 cm in size was observed to originate from the

cervical sympathetic chain, located posterior to the common carotid artery and the internal jugular vein and extending from the level of the common carotid artery separation to the jugular foramen superiorly and the esophagus anteriorly (Figure 3 a, b). The mass was carefully excised completely, preserving the carotid sheath content and neurovascular structures. The operation was terminated without any complications. The permanent pathological examination of the surgical specimen was reported as a schwannoma. The microscopic examination of the specimen revealed Antoni A areas consisting of palisading spindle nuclei cells and hypocellular Antoni B areas mostly comprising histiocytes and showing xanthomatous changes (Figure 4).



Figure 3A

Intraoperative image of the vagus nerve and carotid artery with preserved integrity after mass excision (internal jugular vein retracted anteriorly); V: vagus nerve, ICA: internal carotid artery, ECA, external carotid artery; (a), and image of the specimen after the removal of the mass (b)



Figure 3B

Intraoperative image of the vagus nerve and carotid artery with preserved integrity after mass excision (internal jugular vein retracted anteriorly); V: vagus nerve, ICA: internal carotid artery, ECA, external carotid artery; (a), and image of the specimen after the removal of the mass (b)

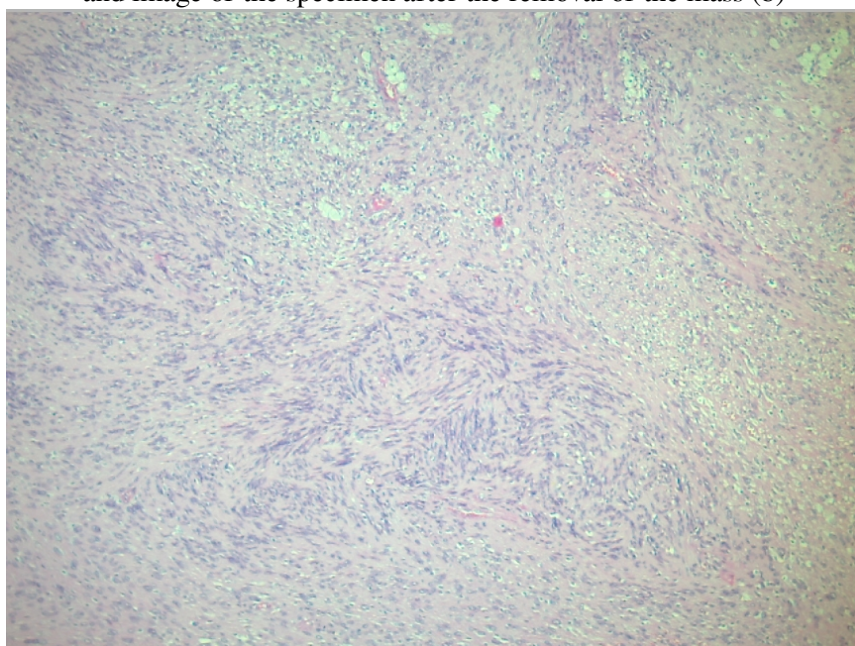


Figure 4

Antoni A areas consisting of palisading spindle nuclei cells and hypocellular Antoni B areas mostly consisting of histiocytes and showing xanthomatous changes (H&E, x50)

Discussion

Approximately 25-45% of extracranial schwannomas are seen in the head and neck region, with the most common localizations being the temporal bone, lateral neck, and paranasal sinuses. Among the cranial nerves, the most common is an acoustic neurinoma originating from the vestibulocochlear nerve [11]. Extracranial schwannomas can also originate from the glossopharyngeal, accessory and hypoglossal nerves. Schwannomas originating from the sympathetic chain have been reported as a rare subgroup [12].

Generally, schwannomas are more common in men between the ages of 30-60 years. However, in a study by Torosian et al., it was shown that two-thirds of extracranial schwannomas were seen in women. Our case was a 42-year-old female patient. Approximately three quarters of patients present with asymptomatic swelling in the neck [13].

It is important to differentiate a schwannoma originating from the vagal nerve and a schwannomas arising from the sympathetic chain in the preoperative period. Since the former usually occurs between the carotid artery and the internal jugular vein, it pushes both structures; thus, they move away from each other. On the other hand, a schwannoma of the sympathetic chain origin does not present with the displacement of the carotid artery and jugular vein [14]. MRA or angiography can be used for the vascular examination of the neck. In our case, no pushing of the carotid artery was observed in MRA imaging.

The preoperative diagnosis of schwannomas is very difficult, and a preoperative diagnosis is not possible in most cases [12]. Biswas et al. reported that only 6% of patients diagnosed with extracranial head and neck schwannomas could be diagnosed preoperatively [15]. Our patient underwent surgery with the pre-diagnoses of glomus tumor, neurogenic tumor, and branchial cleft cyst. A fine-needle aspiration biopsy may be helpful in diagnosis. However, Kang et al. showed that a cytological examination provided conclusive results in only 20% of cases in the diagnosis of schwannoma [11]. Cytologically, the diagnosis can be made by observing Verocay bodies and spindle cells. In our case, no diagnostic finding was obtained from the fine-needle aspiration biopsy.

The size, localization and vicinity of the tumor can be evaluated with imaging methods. Schwannomas have specific MRI findings, including the split fat, fascicular and target signs. In addition, the tumor is isointense to skeletal muscles in the T1 sequence, and mild heterogeneity and increased signal are observed in the T2 sequence [16].

In histological examination, the tumor shows two main features: Antoni A and Antoni B areas. Antoni A areas consist of compact, elongated spindle nuclei and cells with indistinctive cytoplasmic membranes. Verocay bodies, a typical histological feature seen in the Antoni A areas of schwannomas, are cellular clusters with eosinophilic cytoplasmic cell extensions in the middle and a surrounding palisadic arrangement of nuclei. Microcyst formations and hemosiderin are seen in Antoni B areas consisting of cells with round nuclei [17].

The treatment of schwannomas is surgery. However, preserving the integrity of the nerve from which the tumor originates poses a surgical challenge. Kang et al. reported that the cause of the neurological deficit observed in the postoperative period in surgically treated schwannoma cases was the iatrogenic injury of the area where the nerve originated or terminated [11]. In the postoperative period, Horner syndrome may occur due to direct injury to the cervical sympathetic chain during excision or indirect injury caused by traction on the sympathetic chain. While indirect injuries usually heal spontaneously over time, recovery is not expected in cases where the sympathetic trunk is injured [18]. In our case, Horner syndrome was observed temporarily in the postoperative period. During the follow-up of the patient, this finding completely improved at the postoperative sixth month.

Conclusion

In conclusion, cervical sympathetic chain schwannomas generally present with asymptomatic swelling in the neck, and their diagnosis is based on computed tomography, MRI and fine-needle aspiration biopsy findings. In treatment, it is recommended to excise the tumor completely. Surgery should be performed very carefully in order to prevent damage to the nerve and vital structures from which the tumor originates and to reduce postoperative complications. Patients should be aware of the risk of Horner syndrome development.

References

1. Park CS, Suh KW, Kim CK. Neurilemmomas of the cervical vagus nerve. *Head Neck*. 1991;13(5):439-441.
2. Diaz DD, Kennedy KS, Parker GS, White VJ. Schwannoma of the submandibular gland. *Head Neck*. 1991;13(3):239-242.
3. Langner E, Del Negro A, Akashi HK, Araújo PP, Tincani AJ, Martins AS. Schwannomas in the head and neck: retrospective analysis of 21 patients and review of the literature. *Sao Paulo Med J*. 2007;125(4):220-222.
4. Altuntaş, E , Bora, A , Cerrah, Y , Müderris, S , Elagöz, Ş . Kliniğimizde tedavileri yapılan baş ve boyun schwannomlu olgular . *Cumhuriyet Medical Journal* , 2012;34(3), 289-294
5. Ganesan S, Harar RP, Owen RA, Dawkins RS, Prior AJ. Horner's syndrome: a rare presentation of cervical sympathetic chain schwannoma. *J Laryngol Otol*. 1997;111(5):493-495.
6. Anadolu Y, Tatlıpınar AU, Gerçek M, Aytaç S. Servikal vagustan köken alan kistik schwannoma. *K.B.B. ve BBC Dergisi* 2001; pp: 121-4.
7. Batsakis JG, Rice DH, Howard DR. The pathology of head and neck tumors: spindle cell lesions (sarcomatoid carcinomas, nodular fasciitis, and fibrosarcoma) of the aerodigestive tracts, Part 14. *Head Neck Surg*. 1982;4(6):499-513.
8. Colreavy MP, Lacy PD, Hughes J, et al. Head and neck schwannomas--a 10 year review. *J Laryngol Otol*. 2000;114(2):119-124.
9. Sreevatsa MR, Srinivasarao RV. Three cases of vagal nerve schwannoma and review of literature. *Indian J Otolaryngol Head Neck Surg*. 2011;63(4):310-312.
10. Aydın S ve ark. Horner's Syndrome Post-Excision of a Huge Cervical Sympathetic Chain Schwannoma. *Türk J Med Sci* 2007; 37 (3): 185-190.
11. Kang GC, Soo KC, Lim DT. Extracranial non-vestibular head and neck schwannomas: a ten-year experience. *Ann Acad Med Singap*. 2007;36(4):233-238.
12. Leu YS, Chang KC. Extracranial head and neck schwannomas: a review of 8 years experience. *Acta Otolaryngol*. 2002;122(4):435-437.
13. Torossian JM, Beziat JL, Abou Chebel N, Devouassoux-Shisheboran M, Fischer G. Extracranial cephalic schwannomas: a series of 15 patients. *J Craniofac Surg*. 1999;10(5):389-394.
14. Furukawa M, Furukawa MK, Katoh K, Tsukuda M. Differentiation between schwannoma of the vagus nerve and schwannoma of the cervical sympathetic chain by imaging diagnosis. *Laryngoscope*. 1996;106(12 Pt 1):1548-1552.
15. Biswas D, Marnane CN, Mal R, Baldwin D. Extracranial head and neck schwannomas--a 10-year review. *Auris Nasus Larynx*. 2007;34(3):353-359.
16. Beaman FD, Kransdorf MJ, Menke DM. Schwannoma: radiologic-pathologic correlation. *Radiographics*. 2004;24(5):1477-1481.
17. Özlem YAPICIER, Süheyla EKEMEN. Schwannomaların Histopatolojisi. no. 0, *Türk Nöroşirürji Dergisi*, 2016; 26(Ek Sayı 1):1-7
18. González-Aguado R, Morales-Angulo C, Obeso-Agüera S, Longarela-Herrero Y, García-Zornoza R, Acle Cervera L. Horner's syndrome after neck surgery. *Acta Otorrinolaringol Esp*. 2012;63(4):299-302.